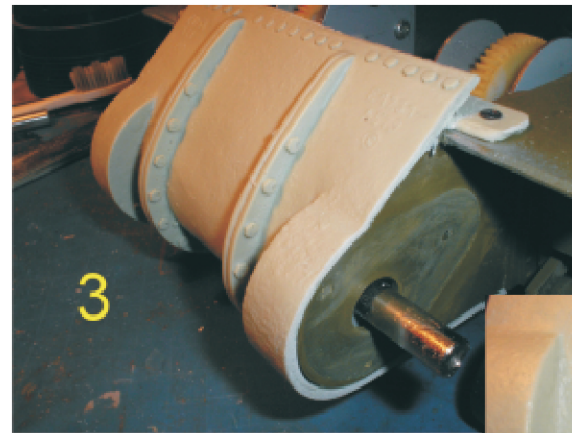


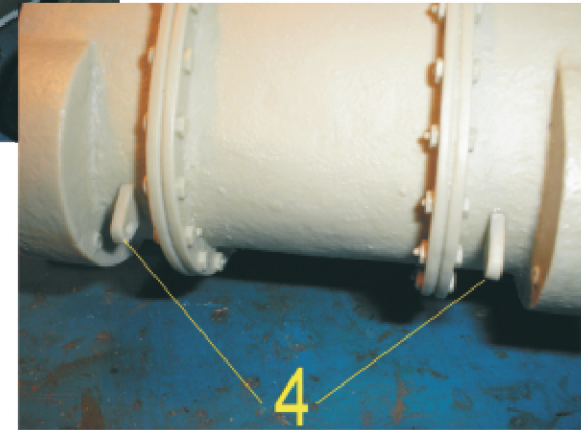
3.

Once you have a good fit it should look like this. At this point you can add the hex bolts to make it more accurate. I simply take some styrene rod and form hexes and then slice and glue. There is lots of reference online for the pattern.



4.

Attach the towing lugs as shown.



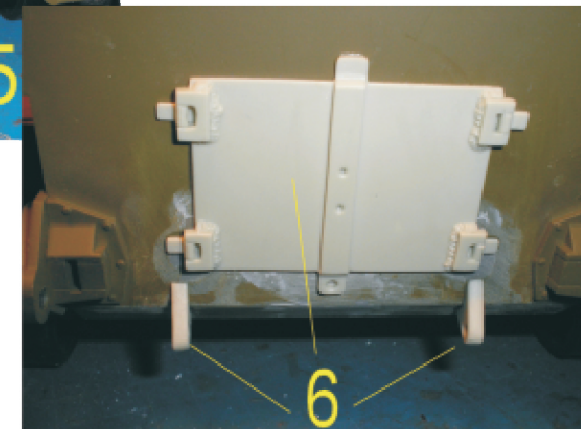
5.

On the rear plate remove all fixtures fill holes and sand smooth.



6.

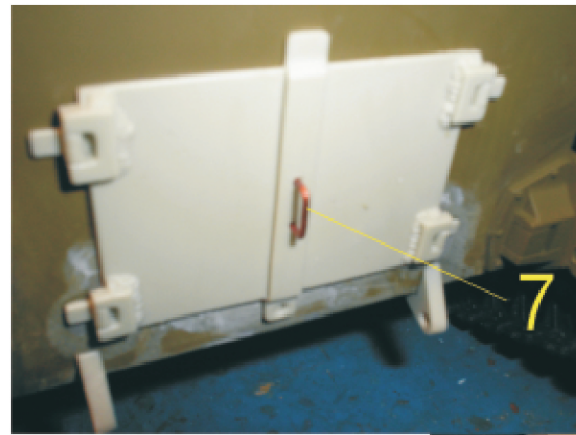
Glue on proper A4 doors and attach rear towing lugs.



7.

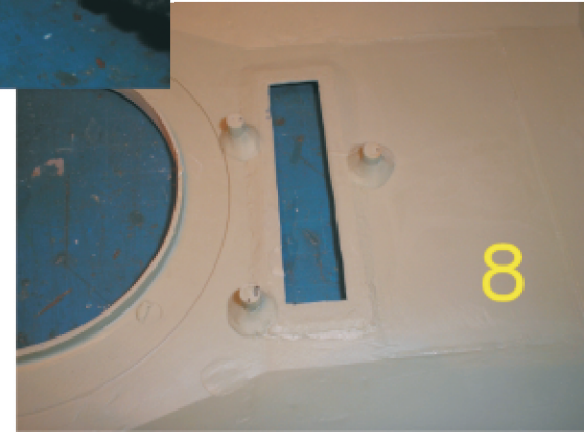
Use 1mm copper wire or paperclip and form a handle as shown. Use CA glue to attach or carefully use a soldering gun to heat the copper till it melts into the doors.

NOTE! This step should actually be done before gluing the doors on the rear plate.



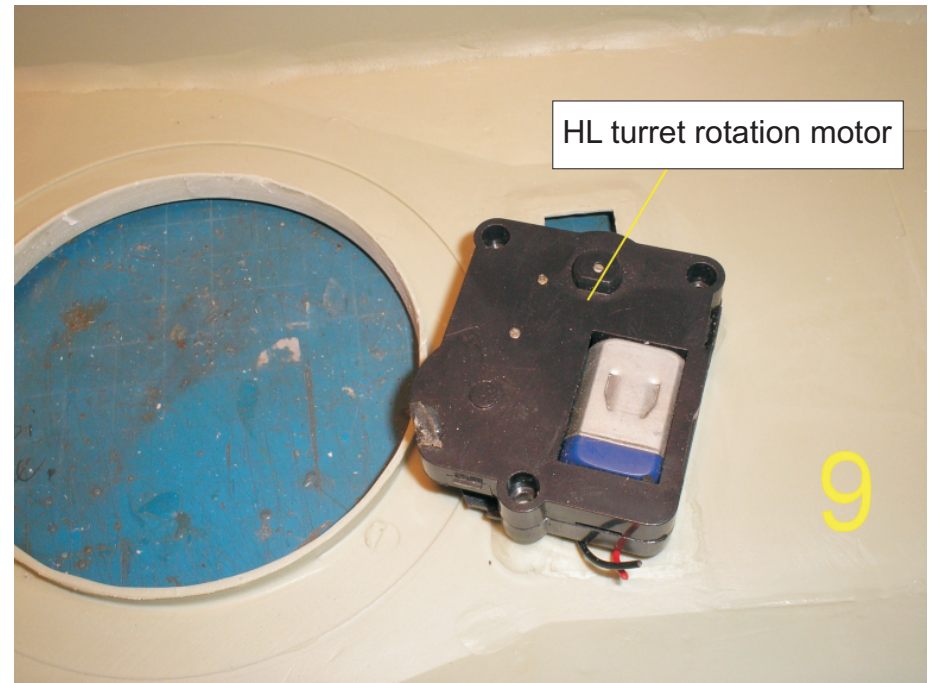
8.

Prep the turret motor mounting posts by pre-drilling holes carefully into the posts.



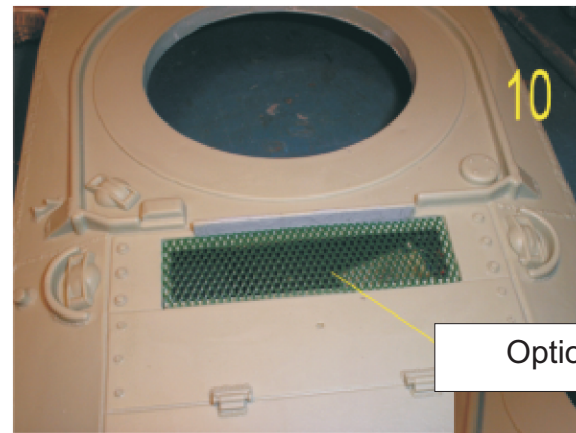
9.

CAREFULLY SLOWLY thread the screws into the holes to mount the turret rotation motor as shown.



10.

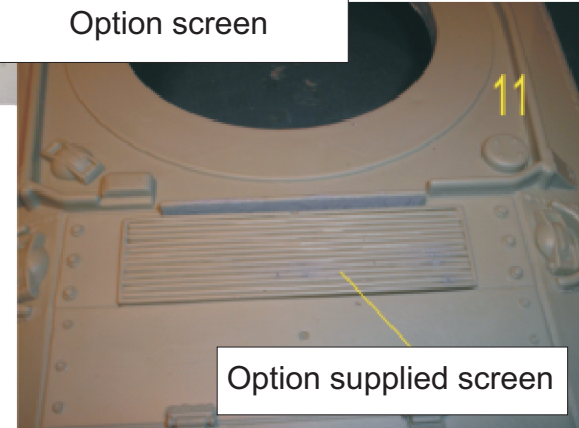
There were several variations of the large air vent covers. We have supplied a resin version of one or you can choose to instal vinyl screen as shown.



Option screen

11.

Supplied resin cover.



Option supplied screen

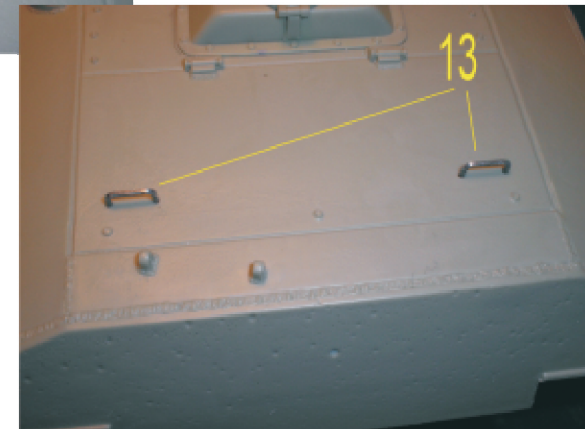
12.

Install radiator cover as shown



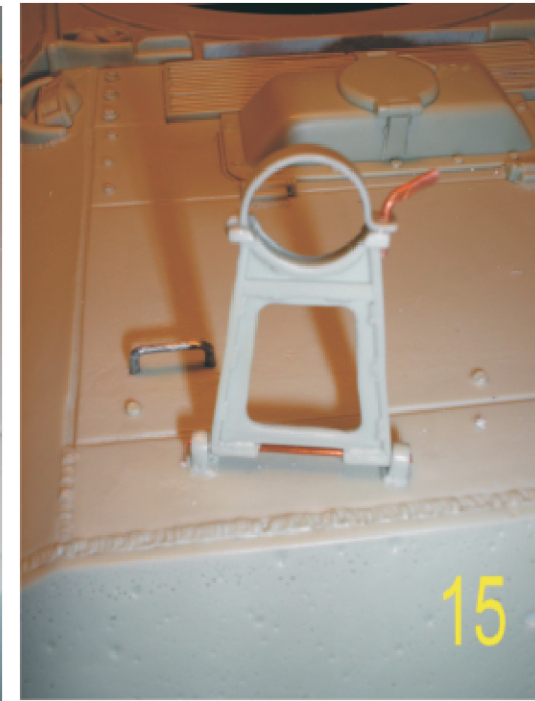
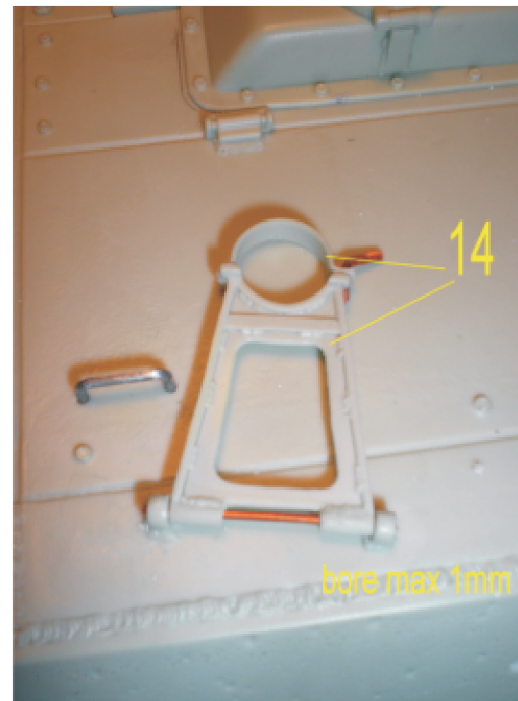
13.

Install engine access panel handles as shown. Again 1mm copper wire or paper clips bent to shape.



14.

CAREFULLY trim away excess resin from barrel travel lock. bore out mounting points on upper hull and on the travel lock with 1mm drill and use 1mm copper wire for pivot shaft and barrel lock as shown.

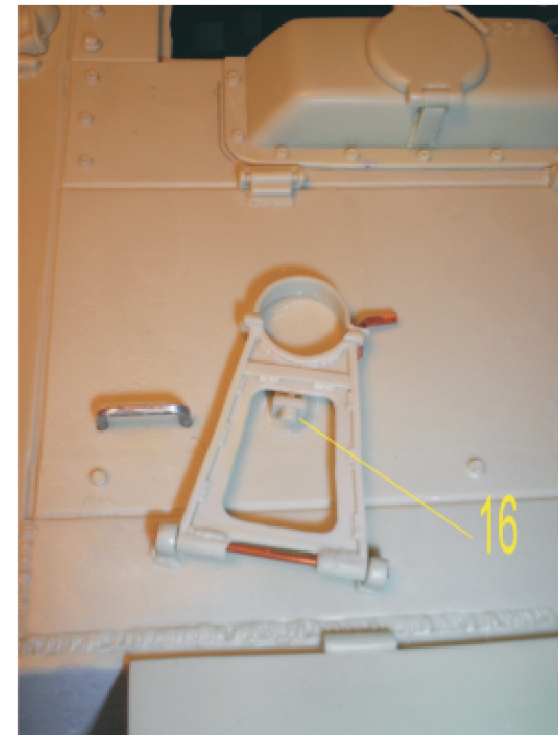


15.

CAREFULLY test operation of the barrel travel lock.

16.

Install barrel travel lock stay as shown.



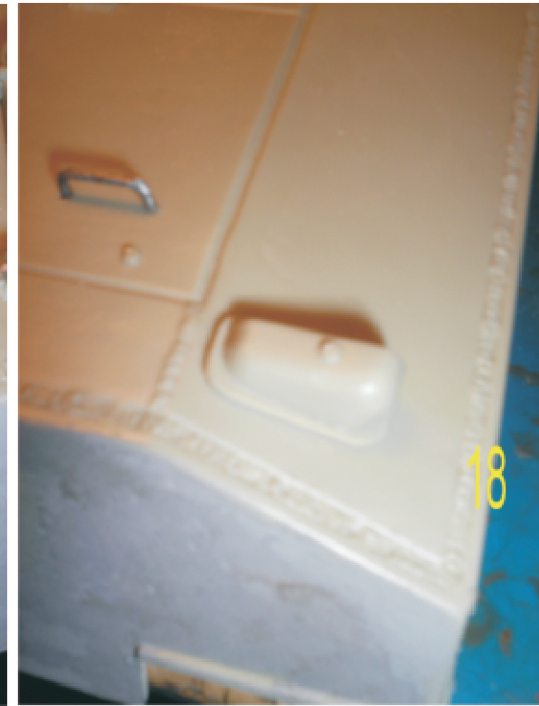
17.

Install left air intake cover as shown



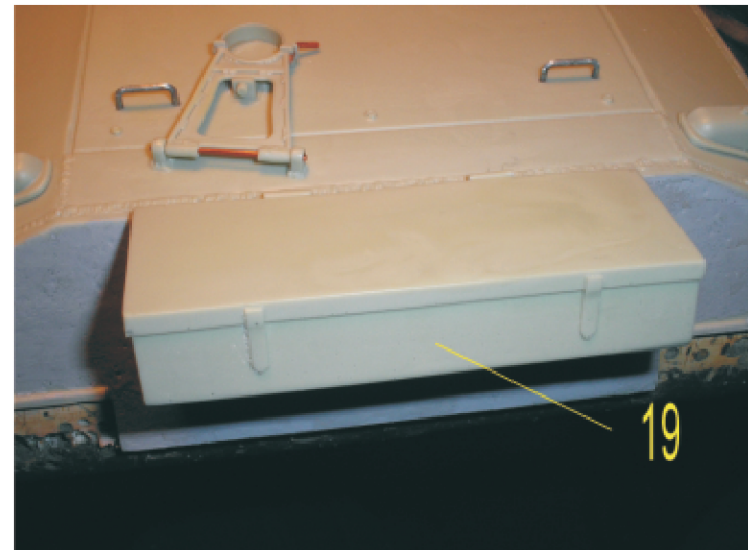
18.

Install right air intake cover as shown



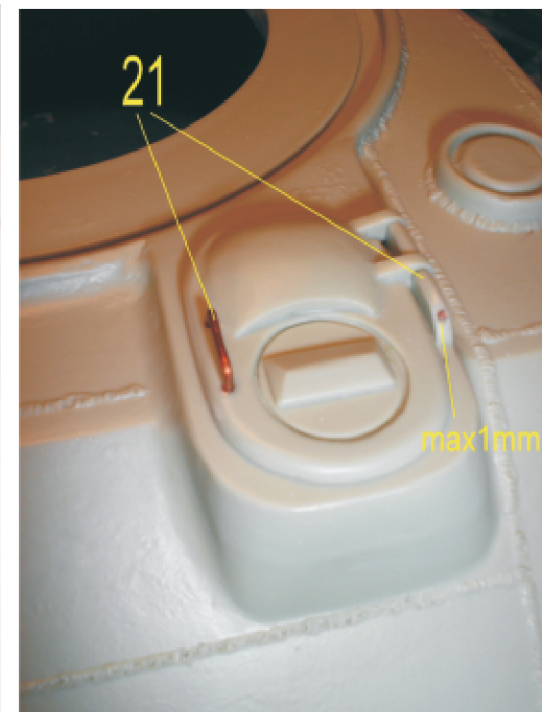
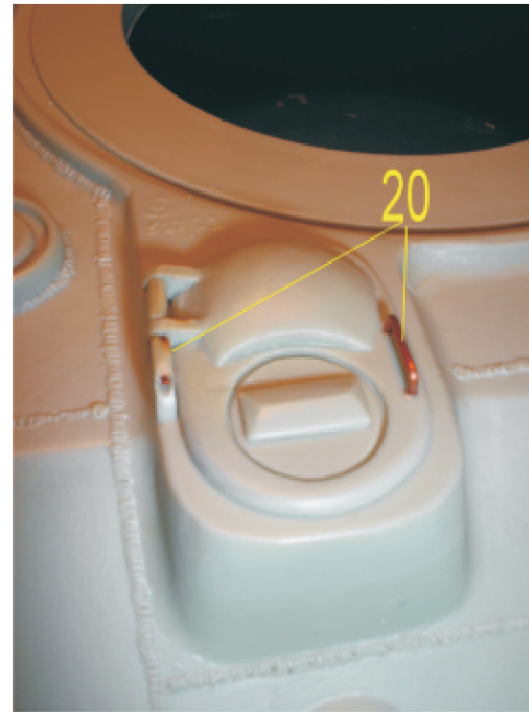
19.

Install rear stowage box as shown.



20.

CAREFULLY trim away excess resin from the small hatches and bore out mounting points on upper hull and on the hatches with 1mm drill and use 1mm copper wire for hinge and handle.

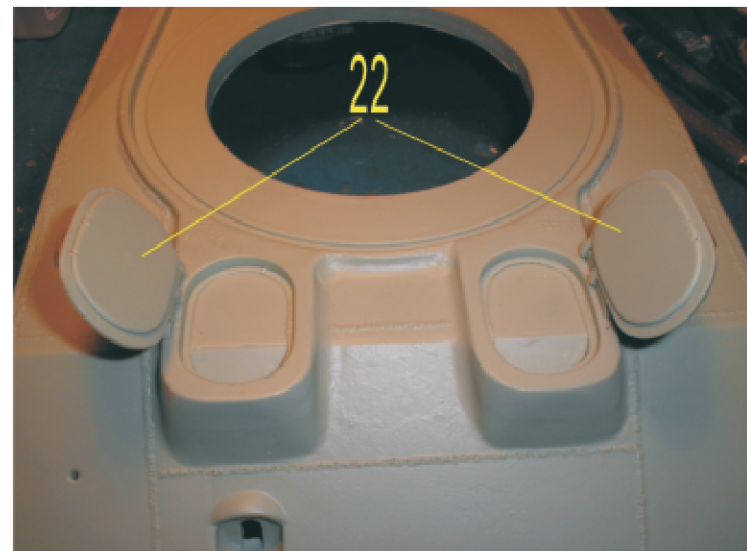


21.

Right hatch as above.

22.

CAREFULLY test functionality of the hatches. you can choose at this point to drill out the interior of the hatches. If you choose to do this please do so with great care!



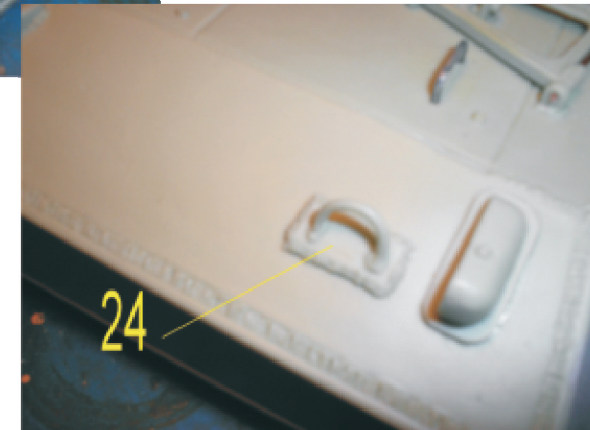
23.

Install lift ring on right as shown.



24.

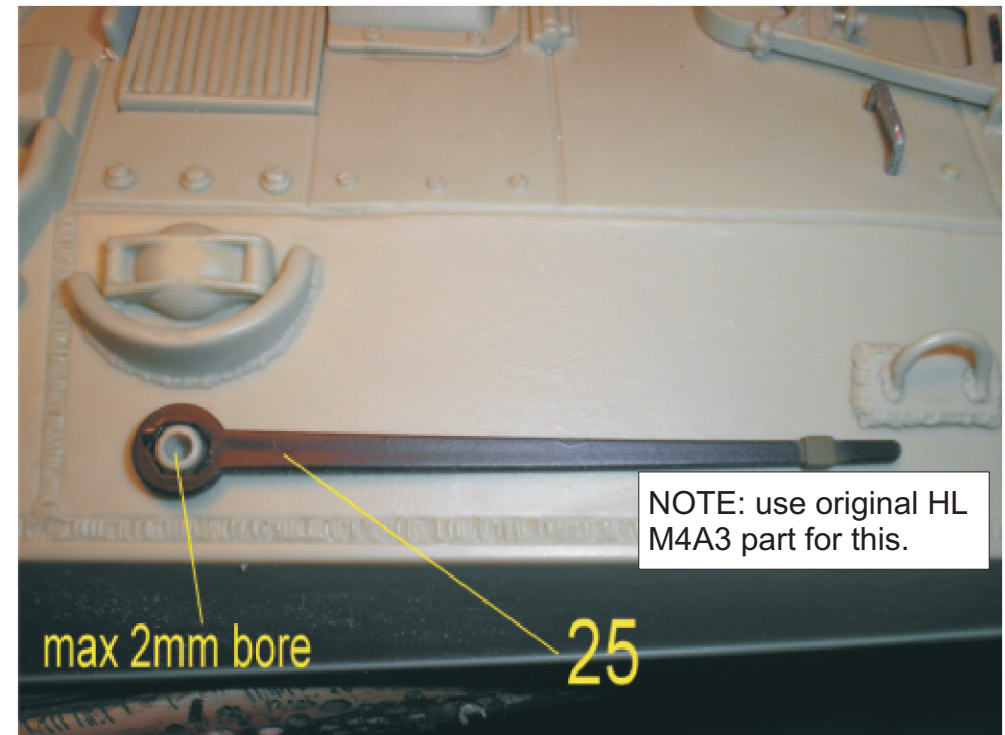
Install lift ring on left as shown.



25.

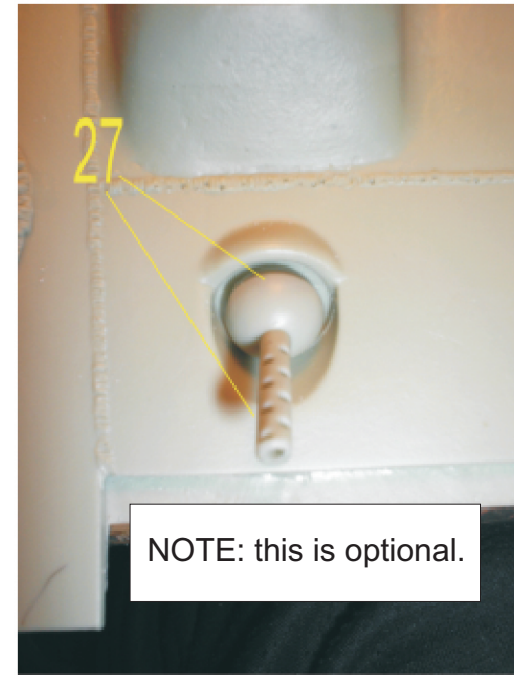
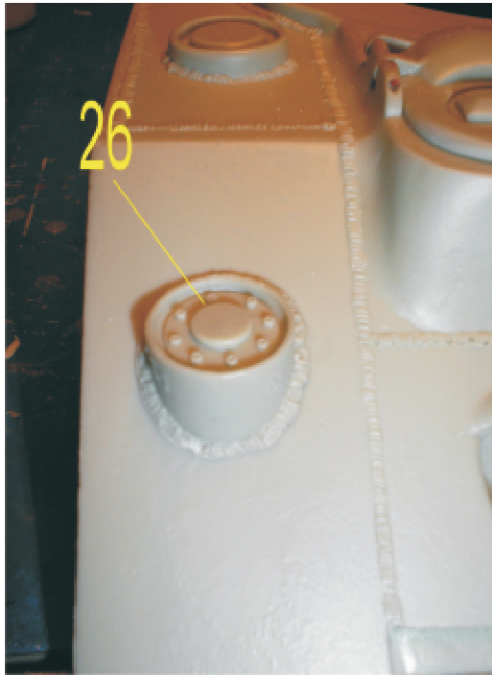
Test fit ratchet on upper hull mounting point.

NOTE: You will be using the original HL part for this. Once the test fit is done bore out the inside of the mounting point with 2mm drill bit.



26.

Mount Antenna housing as shown

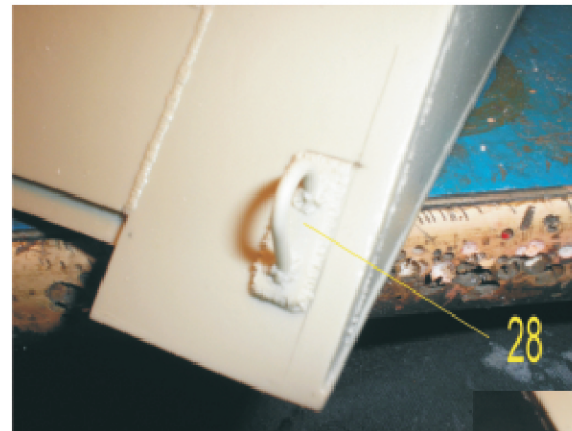


27.

You have the option of mounting the hull .30 CAL MG if you are choosing a model that did not have the applique armour applied.

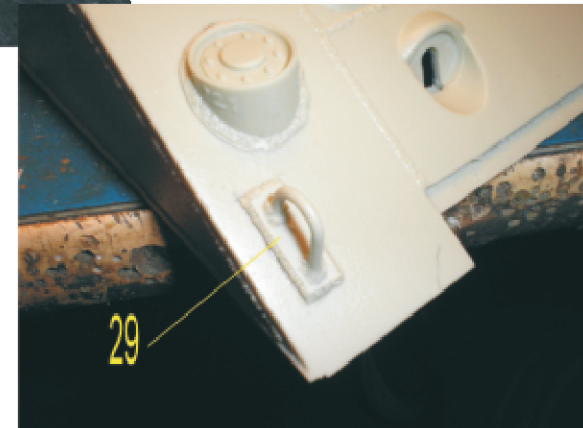
28.

Install right front lifting ring as shown.

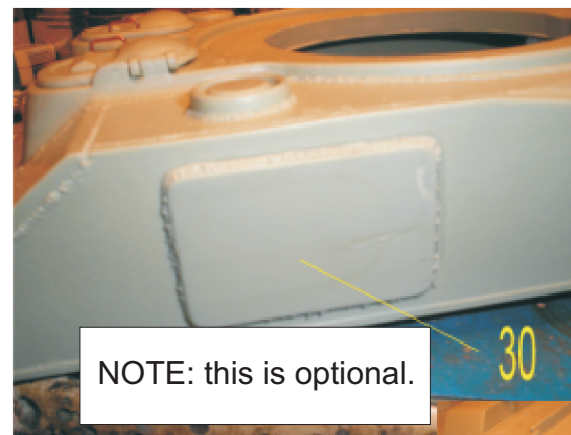


29.

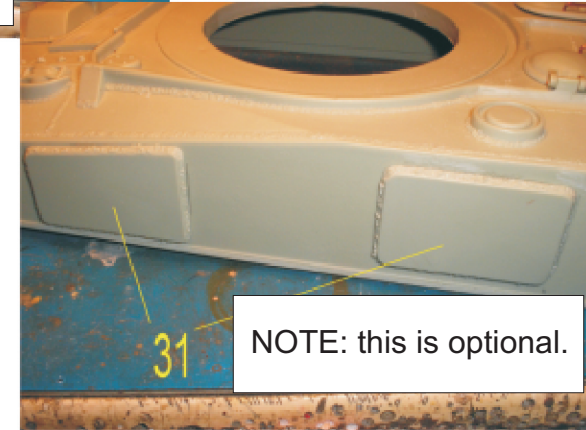
Install left front lifting ring as shown.



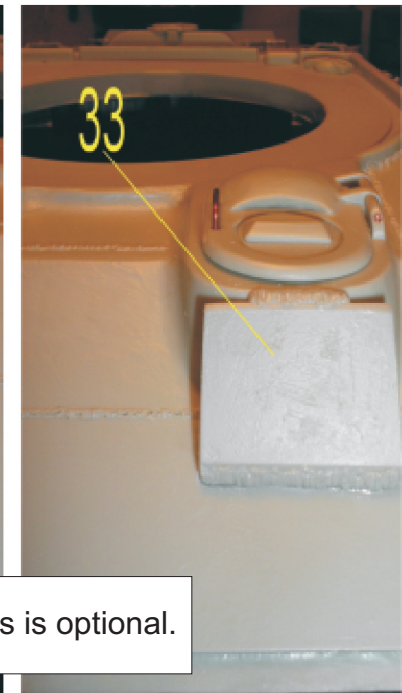
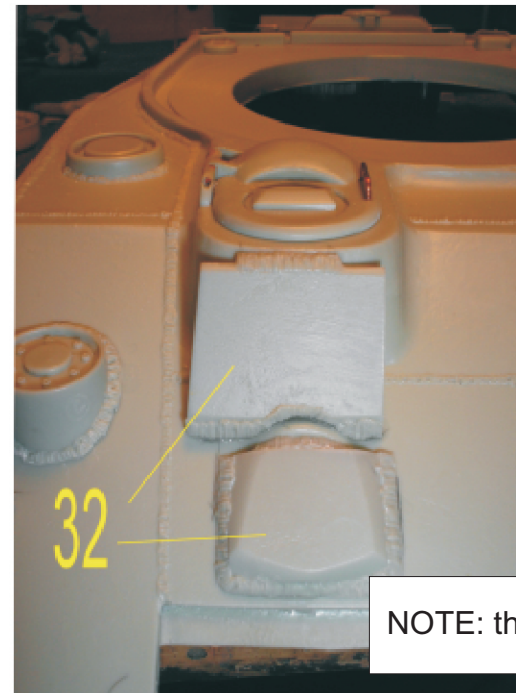
- 30.**
Applique armour optional as shown on right front side hull as shown



- 31.**
Applique armour optional as shown on left front side hull as shown



- 32.**
Applique armour optional as shown on left small hatch and over the hull MG port as shown



- 29.**
Applique armour optional as shown on right small hatch as shown

NOTE: this is optional.

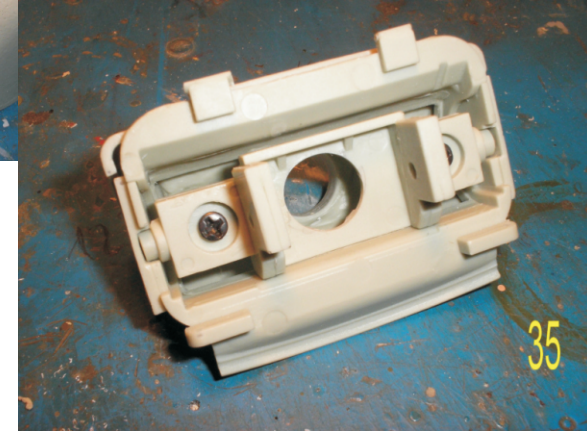
34.

Clean and prep turret



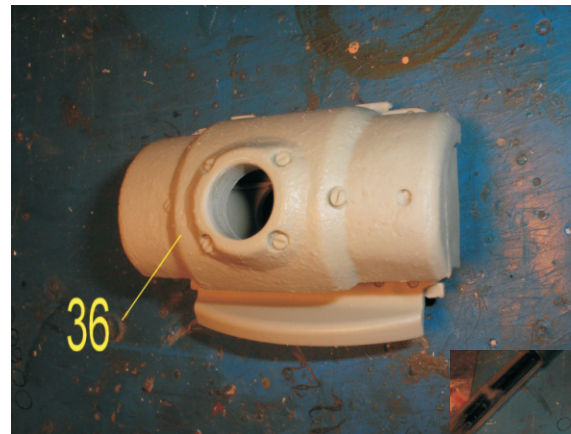
35.

This picture shows the gun mantle set up



36.

Make sure the barrel opening is smooth and fits properly with barrel installed



37.

This picture shows the HL recoil set up with a servo recoil but still utilizing the original HL recoil housing

